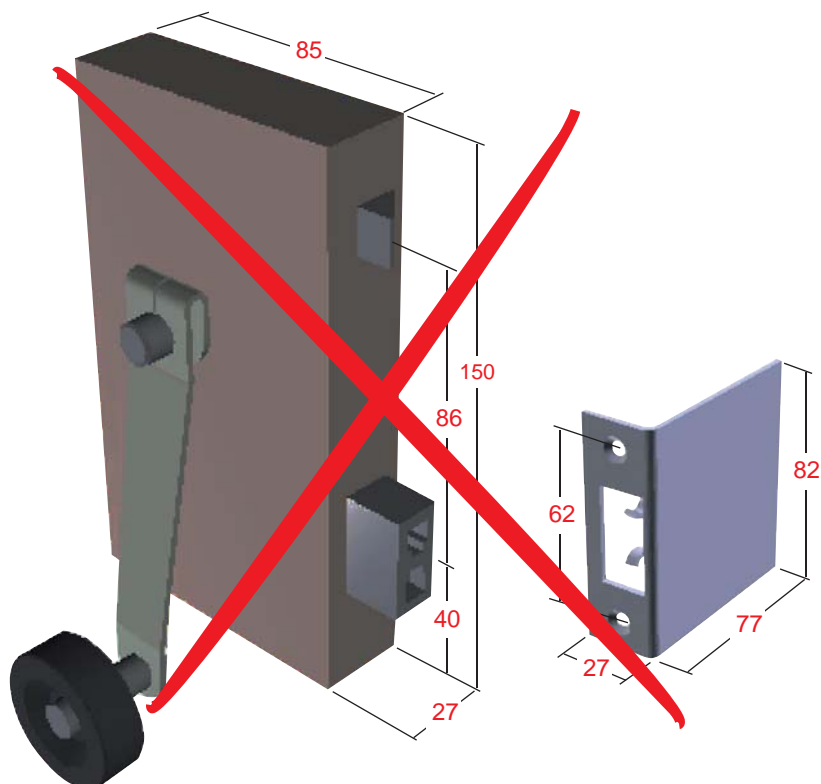
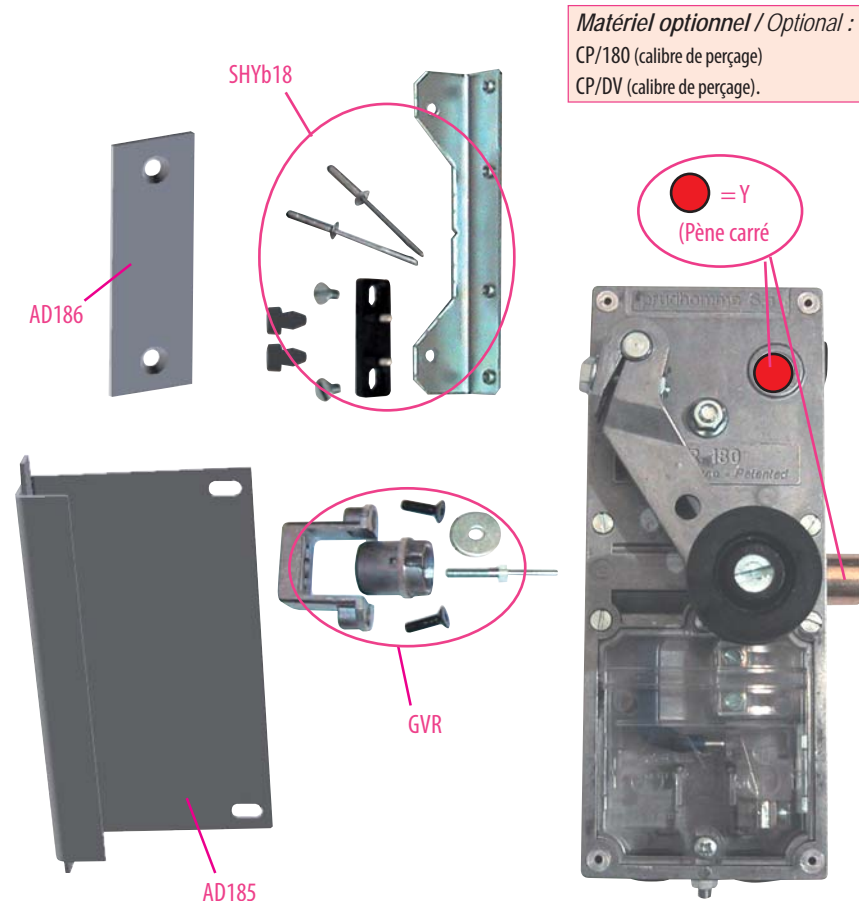


Produit à remplacer
Serrure Pantex 2ème version.



Produit de remplacement
LR 180 ** PA-2 prudhomme S.a



Ind. A du 17/11/2009

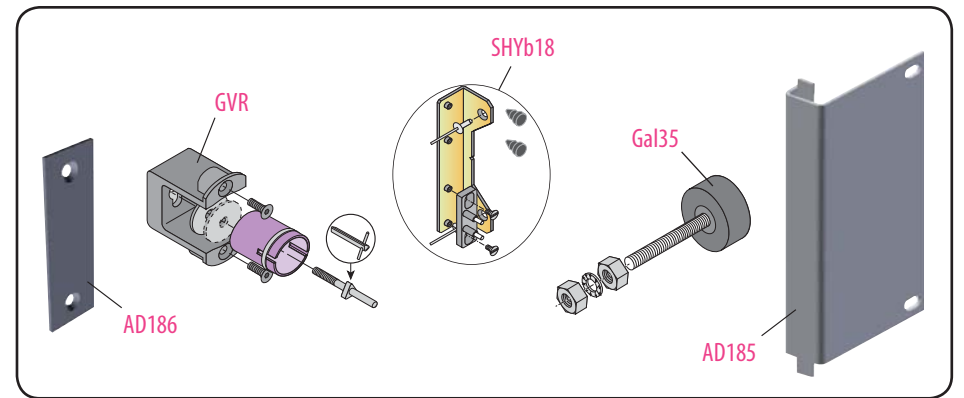
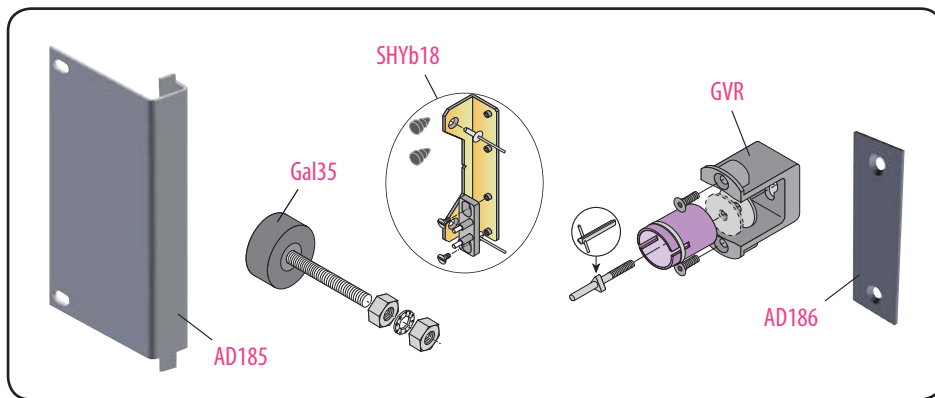
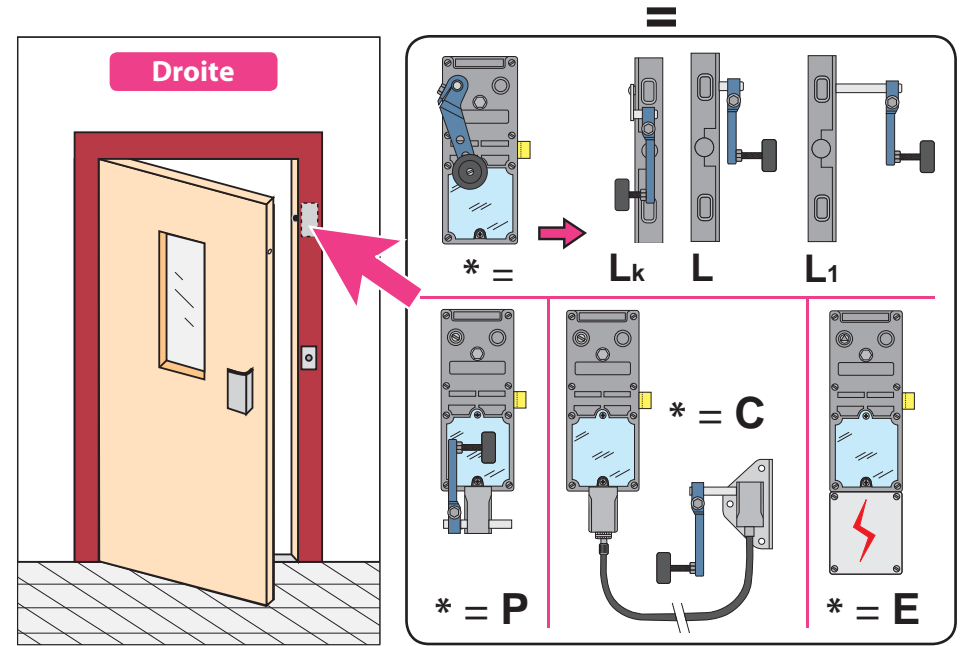
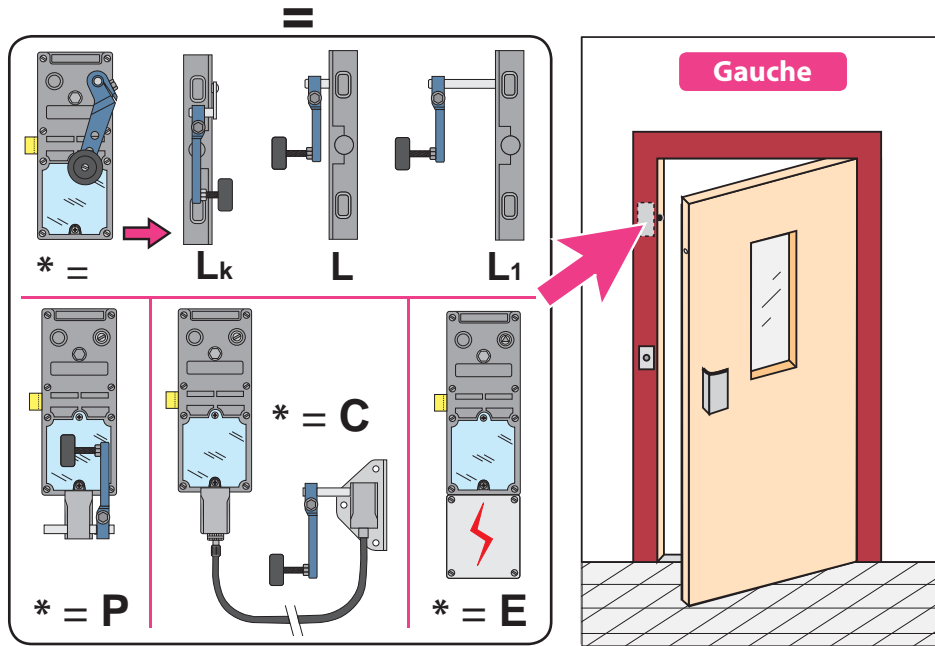
FP

Document non contractuel, sous réserve de modification - Reproduction interdite.

Pour portes palières battantes

réf. : LR180 *G PA-2

réf. : LR180 *D PA-2



Phases de montage

